

Program to Protect CAR Values on Private Land

A program to protect CAR values on Private Land by the voluntary participation of private landowners in the CAR Reserve System will be established based on the following principles.

Principles

- (i) The program will commence once the prioritisation of CAR values and implementation arrangements are established and will continue for an agreed period. Any extension to this would require the agreement of the Parties.
- (ii) Participation in the program by private landholders will be voluntary and no non voluntary instruments will be used to achieve protection of CAR values on Private Land without proper compensation being paid.
- (iii) The program will seek to maximise agreed CAR values on Private Lands in a cost effective manner.
- (iv) The CAR values will, wherever possible, be secured in perpetuity.
- (v) Implementation of the program will be the responsibility of the State, in accordance with paragraphs 9 to 22 below.
- (vi) CAR values identified on Private Land as suitable for inclusion in the CAR Reserve System may be incorporated through a variety of approaches, including stewardship agreements and voluntary sale.
- (vii) Valuations will be conducted by a registered valuer.
- (viii) Private landowners will be afforded the opportunity of playing an active role in the formulation of management plans.

Strategic Plan and the Identification of Priorities

1. A strategic plan (“the plan”) for implementing the program will be prepared by the Department of Environment and Land Management (“DELM”) with advice from the Scientific Advisory Group referred to below. The strategic plan will be submitted to the

Parties for joint approval following its consideration by the Advisory Committee also referred to below.

2. The plan will be developed as soon as possible but no later than 3 months from the commencement of this Agreement. The plan will identify priorities in relation to the protection of CAR values. Those priorities will be based on protecting the values identified during the Comprehensive Regional Assessment (CRA) process in accordance with the JANIS Reserve Criteria.
3. In the context of (2) above, priority attention will be given to protecting rare, vulnerable and endangered vegetation communities, rare and depleted old growth forests and the Priority Species identified in Attachment 2. Attention will also be given to protecting National Estate values on Private Land.
4. The implementation of the strategic plan will source, in part, funds from the National Heritage Trust of Australia Reserve as established under the *Natural Heritage Trust of Australia Act 1997 (Cwth)*. The strategic plan will therefore be framed consistent with the purposes of the Reserve under the Act and the NHT Partnership Agreement including the objectives and outcomes of relevant NHT programs under that Agreement. Subject to the agreement by the Parties, the strategic plan will formally be made an attachment to the Partnership Agreement.
5. The plan will also identify:
 - required objectives;
 - mechanisms for creating landowner awareness;
 - priority setting including timelines; and
 - implementation review and monitoring arrangements.

Advisory Committee

6. The Parties will establish an Advisory Committee (“the Committee”) which shall include representatives nominated by DELM, Private Forests Tasmania (“PFT”), the Forest Practices Board (“FPB”), the Tasmanian Farmers and Graziers Association (“TFGA”) and the Tasmanian Conservation Trust (“TCT”). The Committee shall include a representative of each of the Parties and shall be chaired by the representative of the DELM.
7. In addition to providing advice to the Parties on the strategic plan, the Committee will, on an ongoing basis, monitor the program and, where appropriate, make recommendations designed to improve the delivery and effectiveness of the program.

Scientific Advisory Group

8. DELM will establish a scientific advisory group to advise on formulating the strategic plan and conservation management prescriptions.

Implementation

The organisational structures are given at Figure 1.

9. The program will be administered in accordance with this schedule and the strategic plan agreed between the Parties.
10. Overall responsibility for the administration of the program will reside with the State Minister (“the Minister”) who administers the *National Parks and Wildlife Act 1970* (Tas) in consultation with the Minister administering the *Private Forests Act 1994* (Tas).
11. DELM will be responsible for day to day management of the program.
12. Funds for the program, when made available to the State, will be placed in a trust account and dispersed in accordance with the mechanisms contained in this schedule and the strategic plan.
13. Projects for which funding is sought will be submitted by DELM to the Committee for their advice and recommendation on priorities consistent with the strategic plan.
14. Following consideration by the Committee, DELM will submit to the Minister projects for approval and the Committee’s advice.
15. Where funds are to be sourced from the Natural Heritage Trust, the Commonwealth Minister will, in accordance with the *Natural Heritage Trust of Australia Act 1997* (*Cwth*), ensure that the appropriate procedures are followed in relation to the relevant proposals, with a view to the approval of disbursement of funds to the Tasmanian trust fund.
16. The identification of potential areas for protection will be through two mechanisms:
 - Direct approach for priorities identified in the strategic plan; and,
 - Timber Harvesting Plans (THP) and Private Timber Reserves processes.
17. Where potential areas for protection are identified through Timber Harvesting Plans and Private Timber Reserve processes decisions will be made in a specified period to ensure the interests of private landowners are not compromised.

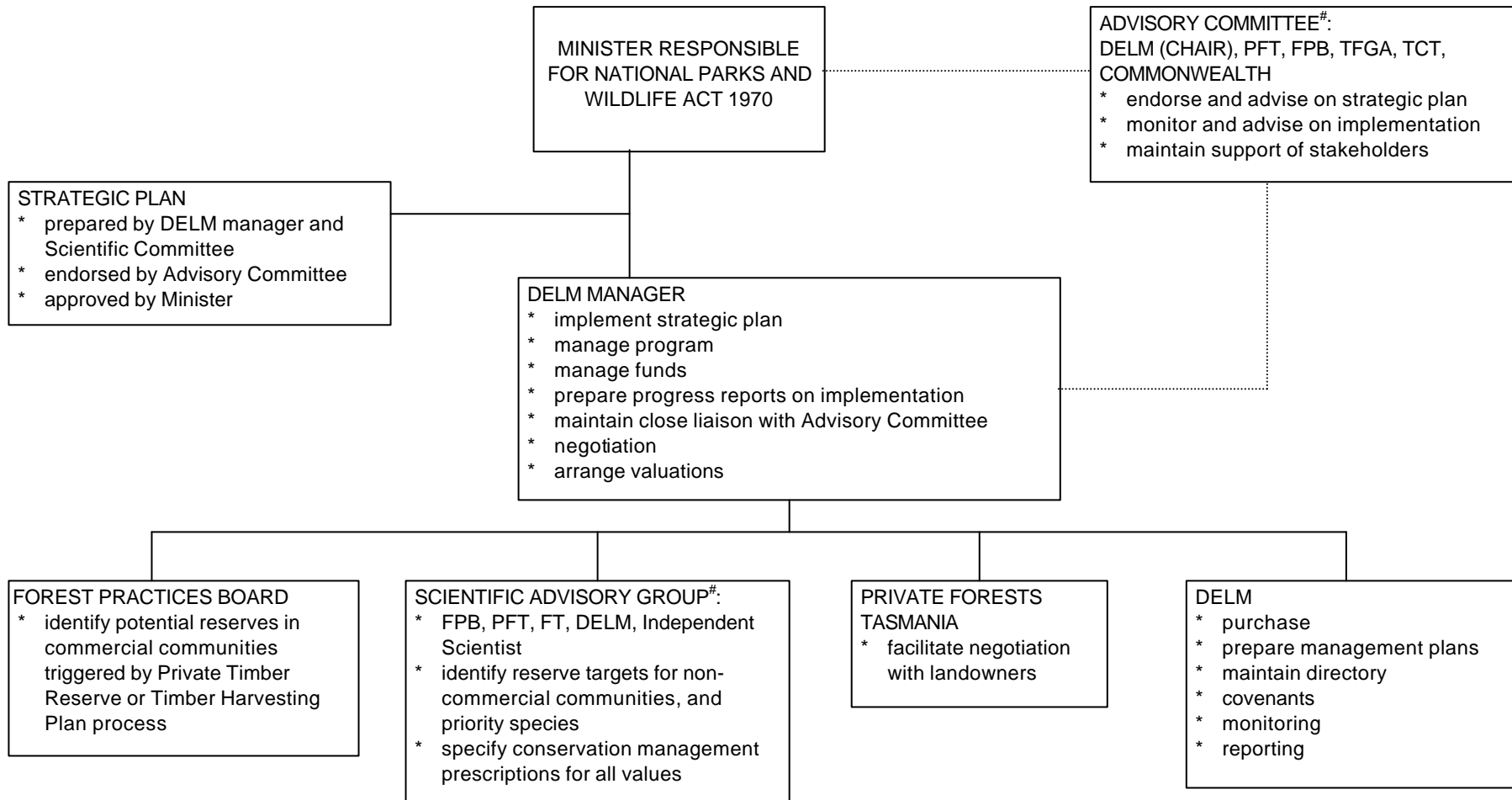
Resourcing

18. The Commonwealth will provide funding for the program. Tasmania will contribute to the ongoing administrative costs of the program including monitoring.

19. Under the *Natural Heritage Trust of Australia Act 1997* and through the Natural Heritage Trust Partnership Agreement between the Commonwealth and the State of Tasmania dated 7 October 1997, agreed commitments under that Agreement will be made available to facilitate private landholders of forested land to protect the environment and heritage values of that land in accordance with this Attachment. Funds may also be used to purchase land, with the agreement of the owner.
20. Funding proposals from the Natural Heritage Trust of Australia Reserve will be considered by the Commonwealth Minister or Ministers in accordance with the requirements of the *Natural Heritage Trust of Australia Act 1997* and the processes outlined in the Partnership Agreement including the objectives and outcomes of relevant Natural Heritage Trust programs.
21. Proposals may be submitted quarterly for consideration. Submissions will be made by the relevant Tasmanian Minister direct to the Commonwealth Minister for the Environment outside of the State Assessment Panel process outlined in the Partnership Agreement to maintain confidentiality in recognition of the commercial-in-confidence and privacy issues involved for individual landholders.
22. Each proposal submitted will be assessed by the Commonwealth and where approved, funds will be made available to the Tasmanian lead agency under the conditions of a Financial Agreement as prescribed in the Partnership Agreement and any other condition as agreed between parties.

Organisation structure for implementation of the Private Land Component of the CAR Reserve System

FIGURE 1.



Note: DELM - Department of Environment & Land Management; FPB - Forest Practices Board; FT - Forestry Tasmania; PFT - Private Forests Tasmania; TCT - Tasmanian Conservation Trust; TFGA - Tasmanian Farmers & Graziers Association
Tasmanian Regional Forest Agreement

Maintaining a Permanent Forest Estate

In recognition of the State's undertakings in relation to intensive forest management, in particular expanded plantation development, and the limited availability of land for plantation establishment, the State has developed a policy and arrangements to maintain a permanent Forest Estate on a state-wide basis.

1. The State will maintain an extensive and permanent Native Forest Estate with the objective of increasing the sustainability of the total Forest Estate.
2. The State has developed a policy and arrangements to maintain Native Forest on a state-wide basis including maintaining a nominated minimum level of total Native Forest area, to meet the requirements of the NFPS for the protection of regional conservation values and catchment objectives.
3. The policy includes maintaining the area of Native Forest at a nominated minimum level within each IBRA region. This level is determined taking account of the proportion of the Native Forest area in each IBRA region which is not subject to forestry operations.
4. The State will monitor changes and collate information on the total area of Forest Communities within each IBRA region. This will include monitoring harvest levels, planned harvest and reforestation activity through the Forest Practices System. The State will, as a priority, amend the *Forest Practices Act 1985 (Tas)* as necessary to achieve this.
5. Appropriate action will be taken by the State if the area of any Forest Community within an IBRA region decreases to a level approaching the nominated minimum level for that region. The State will conduct a formal review of the area of Forest Communities within each IBRA region on a five yearly basis and report on the findings in the 5 yearly review of the Agreement.
6. The State will, in respect of public land, ensure that the existing extent of forest cover is maintained through the operation of the *Forestry Act 1920 (Tas)* which provides for reforestation on all areas harvested for State Forest in accordance with Forest Management Plans issued under that Act.

7. The State will, in respect of Private Land, ensure that:
 - (i) where clearfall harvesting of Native Forest occurs, for each hectare harvested, one hectare is to be reforested to Native Forest or a minimum of half a hectare of plantation established.
 - (ii) where non clearfall harvesting of Native Forest occurs, for each hectare harvested one hectare is to be reforested to Native Forest.
 - (iii) Native Forest regeneration will occur within the IBRA region of harvest.
 - (iv) plantations may be established in any region.
8. The State will, in addition, in respect of Private Land introduce by the year 1999 mechanisms to encourage native vegetation retention and management including the protection of riparian vegetation, consistent with the agreed outcomes of the National Vegetation Initiative as set out in the Tasmanian Partnership Agreement.
9. The State in pursuing this policy on a state-wide basis will aim to ensure that no further Forest Communities become endangered.
10. Reforestation following harvesting on both Public and Private Land will meet the appropriate stocking standard. Naturally regenerated areas including reseeded areas are to maintain as far as is practicable the Native Forest tree species composition of the area.
11. The State agrees that the policy will be reviewed as part of the ongoing review of the Forest Practices Code and in accordance with the provisions for public comment and review set out in the *Forest Practices Act 1985*.

Improvements to Tasmania's Forest Management Systems

The State intends to further improve its Forest Management Systems across forest management agencies and land tenures, by:

1. Implementing the State Policy *Setting New Standards for Water Quality*.
2. Developing a State Policy on integrated catchment management.
3. Developing and implementing a Threatened Species Protection Strategy and recognising the role of sub-regional plans where appropriate (by 31 December 1998) and a Tasmanian Biodiversity Strategy (by 31 December 1999).
4. Implementing the *Historic Cultural Heritage Act 1995*.
5. Developing new legislation in relation to Aboriginal cultural heritage to replace the *Aboriginal Relics Act 1975*.
6. Further developing and applying flexible silvicultural systems on Public Land to promote the sustainable production of long-rotation speciality timbers, particularly in the south and north-west sub-regions.
7. Developing and implementing within the first 5 years of this Agreement, state-wide policies across all tenures on fire management, nature based tourism and recreation management, cultural heritage management in Forest lands, and Forest pest and disease management.
8. Ensuring that management plans are implemented for all State Forest and National Parks by the year 2000, and all other reserves within the Formal Reserve element of the CAR Reserve System by the year 2003 or as soon as practicable thereafter. Management plans will include objectives and be periodically reviewed to assess performance against each objective.
9. Implementing as a high priority the mechanisms for improving the transparency and independence of the Forest Practices Board.
10. Continuing to adequately resource the system surrounding the Forest Practices Code (including compliance, implementation, education, training, review, research) and maintaining appropriate contributions by industry to ongoing management costs associated with the Code.

11. Developing and implementing by the year 2000, a code of practice for reserve management to cover all environmental practices, including guidelines concerning erosion risk from roads and tracks within reserves.
12. In relation to the Forest Practices System, including the Forest Practices Code, ensuring that:
 - where the management intention of the Forest or Private Land is to regenerate forest, timber harvesting plans will specify best-practice reforestation standards and provide for ongoing monitoring; and
 - where endangered species have been identified in an area for which timber harvesting plan approval is sought by private landholders, the plan will include conditions which ensure the application of appropriate management prescriptions to those species.
13. Ensuring that management plans for Formal Reserve and Informal Reserve elements of the CAR Reserve System clearly identify the CAR values identified in the CRA and the actions being taken in each reserve to appropriately manage those values.

Public Reporting and Consultative Mechanisms

Existing Commitments

Current public reporting and consultative mechanisms relevant to the management of Tasmania's forests include:

- preparation and amendment of forest management plans under the *Forestry Act 1920 (Tas)* every 10 years;
- preparation of annual Three-year wood production plans for State Forest;
- changes to the lists of species, preparation of and amendment to the Threatened Species Strategy, Recovery Plans and Threat Abatement Plans all of which have been developed under the *Threatened Species Protection Act 1995 (Tas)*;
- changes to the Register under the *Historic Cultural Heritage Act 1995 (Tas)*;
- reviews of guidelines in the Forest Practices Code (Tas) and comment on proposed revisions to that Code;
- preparation, amendment and review of management plans for reserves under the *National Parks and Wildlife Act 1970 (Tas)*;
- preparation of management plans for lands covered by the *Crown Lands Act 1976 (Tas)*;
- nomination, preparation and possible contraventions of Recovery Plans and Threat Abatement Plans all of which are prepared under the *Endangered Species Protection Act 1992 (Cwth)*;
- listing of places on the Register of the National Estate under the *Australian Heritage Commission Act 1975 (Cwth)*;
- publication of annual reports by Forestry Tasmania, DELM, Private Forests Tasmania, the Forest Practices Board, the Cooperative Research Centre for Sustainable Production Forestry and the Tasmanian Forest Research Council;
- publication of 5-yearly State of the Environment and State of the Forest reports;

- consultation with the Aboriginal community in relation to Aboriginal cultural heritage information.

New reports to be prepared by the State

The State has agreed to prepare the following public reports within the timeframes specified. They are to be available, for a fee or otherwise, to all interested persons on request.

1. Complete and publish silvicultural guidelines for the management of commercial Forest types by the 31 December 1998.
2. Publish by the 31 October 1998 a description of the methods of calculating sustainable yield on Public Land, including special species timber sawlogs.
3. From the 1997-98 financial year, relevant agencies will include in their annual reports a report on outcomes of the compliance audits for codes of practice, and the monitoring of Forest regeneration success and trends.
4. By the 30 April 1998, a document describing the Management Decision Classification System will be released. This document will include information on the classification criteria for each zone and summaries of special management zones.
5. By the 31 March 1999, prepare and release a revised manual for the Management Decision Classification System, including prescription guidelines for special management zones.

RFA Forests - Employment and Industries Development Strategy

1. Both Parties agree to a framework of government actions under the Agreement to facilitate enhanced employment and industry development, based on secure access to Forests.
2. The framework of actions and the agreement for funding includes a series of generic actions, and specific actions for the following four sectors:
 - tourism (especially nature based tourism).
 - wood and wood products.
 - minerals exploration.
 - other industries that depend on access to Forests.

Implementation

3. The parties agree to contribute in appropriate ways to the implementation of the specified actions within this Strategy:
 - The Commonwealth agrees to support the Strategy by providing funding as in clause 101 of the Agreement for a number of specific actions; and
 - The Commonwealth agrees that its contribution to funding for other actions for which it is responsible, or jointly responsible, will be obtained through existing industry development and vocational skills programs. The Commonwealth will encourage Tasmanian applications for assistance under these programs, for actions included in this Strategy.

Generic Industries Development Actions

4. The Parties agree to jointly implement the following generic actions:
 - Microeconomic reforms, including those in the National Competition Policy and reforms for both land and sea transport, aimed at improving the competitiveness of Australian industry.
 - Facilitating production and marketing networks between existing and emerging industry participants, including by:
 - ◆ facilitating access to relevant Commonwealth assistance programs to develop integrated industry structures and strategic partnerships (i.e. networks); and

- ◆ export facilitation.
 - Continuing to jointly assist in funding, where appropriate, prefeasibility and feasibility studies for Forest based industry projects which have strategic significance and economic potential for the State and the nation.
5. The State agrees to implement the following generic actions:
- Ensuring the dissemination of market information through key industry groups working with industry to develop voluntary product quality systems (similar to Tasmania’s “Quality Wool” program) and, where applicable, to develop packaging and presentation systems similar to those used by Tasmania’s manufacturers that compete successfully in national markets.
 - Introducing an integrated development approval system and land leasing system for Public Land which complements the principles and provisions of the State’s planning and environmental legislation.
 - Utilising the “one stop shop” strategy for “over the counter” or electronic transactions involving approvals, licensing and payments.
 - Examining requirements for basic electricity, water and transport infrastructure in key areas for development to achieve international competitiveness.

Generic Employment and Skills Development Actions

6. Both Parties agree to facilitate the coordination of programs between Government departments, industry and training providers to ensure efficient and effective delivery of training covering the important areas of:
- business management and planning
 - use of technology in all aspects of industry
 - safety and effective work practices
 - marketing and marketing technology
 - design
7. The State will work with industry to coordinate on-the-job training curricula with the Tasmanian College of Technical and Further Education, the University of Tasmania and other training providers to maximise consistency, efficiency and effectiveness of on-the-job and off-the-job training while minimising the disruption to operations.

8. The Commonwealth will continue to provide advice and assistance through its industry programs to eligible businesses (including Forest based businesses), in the areas of:
- research and development
 - commercialisation
 - business and strategic planning (including quality management and benchmarking)
 - business networks
 - business licensing
 - innovation
9. Though the Department of Industry, Science and Technology, the Commonwealth will continue the funding of a dedicated Forest Industries Client Manager to promote the development of Forest based industries in Tasmania. The client manager will establish and maintain contact with all companies in the wood and paper sector, to assist them in identifying and accessing relevant industry development programs.

Specific Tourism Industry Development Actions

10. The Parties will jointly facilitate sustainable tourism development by the following actions:
- Providing resources to maintain the environment and heritage values of existing and new reserves.
 - Providing resources for the visitor infrastructure and services required by markets in existing and new reserves, including Commonwealth funding under the RFA for the establishment of two new major interpretation facilities at suitable locations.
 - Examining opportunities for funding, through the Natural Heritage Trust, projects to implement elements of the Tasmanian Statewide Walking Track Strategy.
 - Providing the opportunity for eligible organisations in Tasmania to apply for grants under Commonwealth government tourism development programs.
11. Tasmania will facilitate tourism industry development through the following marketing actions:
- analysing markets and targeting State campaigns accordingly.
 - identifying the core preferred destinations of the “free independent traveller” and facilitating the provision of appropriate infrastructure and services.

- encouraging the year round use of Tasmania's national parks and other reserves through marketing, information and interpretation.
 - introducing a state-wide tourism signs policy in light of the results of the recent Arthur Highway Pilot project.
12. Tasmania will on a continuing basis examine opportunities under Commonwealth programs for research into sustainable tourism.
13. Tasmania will facilitate sustainable tourism resource development by the following actions:
- Detailing priority locations / areas that have significant potential for nature based tourism development.
 - Developing investment briefs for identified sites with potential for major investment in nature based tourism developments, e.g. Freycinet, Cradle Mountain, Mt Wellington and Lake St. Clair.
 - Consulting with the tourism industry, consistent with the Tourism Protocol Agreement for the management of visitor impact.

Wood and Wood Products Industry Development Actions

14. Both Parties agree to implement the national “Plantations for Australia: The 2020 Vision” for expanding plantations in the Tasmanian context.
15. Both Parties will jointly facilitate development of the resource, on which the Forest industries and related employment depends, by the following actions for which specific funding will be provided by the Commonwealth under the Agreement:
 - Expanding the level of intensive management of hardwood Forests on Public Land, including:
 - * pre commercial thinning of very young eucalypt plantations and regrowth Forests;
 - * commercial thinning of young eucalypt plantations and regrowth Forests;
 - * establishment of new eucalypt plantations for sawlog production; and
 - * improved planning to facilitate subsequent thinning in newly regenerated Native Forests.
 - Establishing new special species timber resources (e.g. blackwood plantations and fenced regeneration).
 - Supporting research and development into alternative, chemical-free pest and weed control systems for intensively managed Forests.
16. The State will facilitate softwood plantation resource development and related employment opportunities by expanding the current rate of softwood plantation establishment.
17. The Commonwealth will provide specific funding under the Agreement for the construction of essential infrastructure to provide more efficient access to Forest resources and to reduce haulage impacts on existing routes, noting that these new roads will also give access for other Forest users and for the general public.
18. The Parties will jointly facilitate wood and wood products industry development and related employment opportunities by the following actions:
 - Continuing to support programs to educate the public on issues of Forest management and on the suitability of wood as an environmentally acceptable raw material for a wide range of uses.

- Continuing the funding of research, including specific funding under the Agreement, into new processing technologies and market opportunities to assist in the transition from old-growth to regrowth and plantation resources including:
 - ◆ new sawing and seasoning techniques (e.g. pre-drying, solar kilns, thermal vacuum systems);
 - ◆ technologies for manufactured wood products (e.g. panel products, laminated beams, paper); and
 - ◆ commercialisation of new technologies (e.g. kiln drying).
 - Supporting a new emphasis in furniture design and marketing that complements Tasmania's existing success in "one off" design for high value, but focuses on product lines more suited to large scale production for medium to high value markets.
 - Investigating opportunities to improve Forest harvesting technologies by, for example, the design of log trucks.
19. The State will facilitate wood and wood products industry development by the following actions:
- Supporting the development by industry of comprehensive reports on market trends, commodity and log price information and supply and demand factors facing the timber, pulp and paper, panel and woodchip industries.
 - Amending the terms of reference of the TFFIC to provide advice on:
 - * a strategic overview of the market for forest products (including specifically export logs) and the preference for maintaining and increasing domestic processing in Tasmania; and,
 - * the encouragement of the development of downstream processing in Tasmania, such that the preferred market for growers is within the State.
 - Maintaining an Internet site for Tasmanian timber, open to all industry participants to provide a new method of marketing and increasing awareness of individual products.
 - Continuing to support the Tasmanian Wood Design Collection, through sponsorship and other assistance by Forestry Tasmania, through continuing the biennial exhibition and purchase program and through seeking further opportunities to use the collection to advertise Tasmanian wood design nationally and overseas.
20. The Commonwealth will facilitate, through its FISAP program and other programs, industry development for the Private Forests sector by the following actions:

- Assisting in the expansion of private planting including by encouraging partnerships and joint ventures between property owners and investors.
 - Assisting the State in programs aimed at achieving increased numbers of Private Forest owners managing and improving productivity in their forests.
21. The Commonwealth will facilitate through the FISAP and other programs, overall industry development by the following actions:
- Providing assistance for sawmilling industry redevelopments, on a case by case basis. The assistance is designed to help industry adjust to predominantly regrowth and plantation resource supplies while achieving value adding investments, improved productivity and international competitiveness.
 - Encouraging the use of “Crown Cut” regrowth veneer, for construction and renovation projects that involve the Commonwealth, including by promotion: within Commonwealth purchasing agencies; and within design specifications.
 - Advocating the use of wood and wood products sourced from regions covered by RFA’s and from regions where the Commonwealth has removed export controls on wood sourced from plantations, on the basis that they :
 - ◆ are recognised as sustainably managed; and,
 - ◆ will be considered by the Commonwealth to have environmental credentials such that there is no basis for discrimination against such products on the issue of sustainability.
22. The Parties, based on the Agreement, will promote the sustainability of Tasmanian wood products in domestic and international markets.
23. The Commonwealth, as part of the Wood and Paper Industry Strategy and other programs, will facilitate skills development in enterprises and workplaces by:
- Development of programs within the harvesting, sawmilling, and furniture manufacturing sectors as part of the *National Small Business Best Practice Professional Development Program*.
 - Assistance in the form of Network grants for sawmilling and furniture small to medium enterprises in the Commonwealth’s *Technology Support Centre Program* for technology transfer. Grants for sawmilling enterprises would assist in the use of advance timber seasoning concepts, and for furniture manufacturing enterprises, would assist the adoption of intricate and high volume computer controlled processing.

- Working cooperatively with the relevant agencies to promote and market *National Vocational Education Training* packages in Tasmanian forestry and ecotourism.
- Encouraging Tasmanian applications for funding under the *Industry Skills Centres Program* in the areas of:
 - ◆ Plantation and intensive Native Forest silviculture;
 - ◆ Sawing and seasoning;
 - ◆ Packaging and consignment for export;
 - ◆ Merchandising and marketing;
 - ◆ Catchment management; and
 - ◆ Ecotourism
- Encouraging the uptake of the Commonwealth's work-based *New Apprenticeships Program*.

24. The Parties will jointly facilitate skills development by:

- Encouraging Australian National Training Authority assistance, through the Forest and Forest Products Education Skills Company and the Tasmanian Forest Industry Training Board, of *Vocational Education and Training in Schools* in the areas of:
 - ◆ Ecotourism;
 - ◆ Information Technology including mapping, communication, engineering and construction; and
 - ◆ Forestry.
- Encouraging the adoption of the Commonwealth's *School - Industry Links Demonstration Program* by local forestry and ecotourism businesses in regional centres in Tasmania.

Minerals Industry Development Actions

25. The Parties will jointly facilitate minerals industry development and related employment by the following actions:

- Implementing the Regional Minerals Program for the Western Tasmanian Minerals Province, to enable development of an optimal development strategy for the minerals industry.
- Actively advocating and supporting the Agreement as providing secure access to those areas having land tenure suitable for minerals exploration and mining.

- Through data acquisition and research, support the development of an improved geoscientific knowledge base at regional and continental scale to promote investment in mineral exploration.
26. The State will provide and maintain relevant databases and search and retrieval systems on line to clients.

Actions to develop other industries dependent on access to Forests

27. Tasmania will facilitate industry development and related employment for wood craft industries dependent on special species timbers by the following actions:
- Assessing the potential for additional areas of State Forest in Tasmania to be managed for the long term production of special species timbers and implementing appropriate zoning and management for those areas that are suitable.
 - Promoting access to unprocessed and semi processed special species timbers and craftwood and by developing new opportunities for the use of species such as silver wattle and white sassafras, noting that these actions are currently addressed through Forestry Tasmania’s business “Island Specialty Timbers”.
 - Supporting the establishment of the “Living Boat Trust” for the registration, preservation and study of Tasmanian’s wooden boats and for the recording of associated history.
 - Assisting in the construction of appropriate mooring facilities adjacent to the Shipwrights’ Point School of Wooden Boat Building.
 - Promoting and fostering the further development of a viable wood design and fine craft industry.
 - Providing seeding funds to boost the marketing role of the Tasmanian Design Development Company, with the following particular emphases:
 - ◆ marketing Tasmanian wood design and fine furniture;
 - ◆ developing potential retail outlets; and
 - ◆ pursuing new markets for corporate crafts through direct representation or establishing a regular presence at fine craft and design fairs throughout Australia.
 - Conducting a study to identify the best potential locations in which to establish “focus areas” for wood design and other fine craft, akin to the Salamanca

complex in Hobart, and to foster the establishment of such focus areas in other locations that are shown to be commercially viable.

28. The Commonwealth will assist the State, in :
- Maximising the recovery of special species timbers from Forests managed for these timbers and from all other harvested Forests.
 - Establishing a trading house and permanent storage facility for wooden boat boards, such that irregular supply and demand patterns can be managed to optimise the long term state-wide recovery of boards suited to wooden boat building from sawmillers processing Huon pine and celery top pine (in particular).
29. Tasmania will facilitate industry development and employment for other industries dependent on Forests by the following actions:
- Developing and implementing an agreed management plan and licensing system for the harvest of *Dicksonia antarctica* tree ferns across all available land tenures, to be administered by Forestry Tasmania and the Department of Environment and Land Management and to meet the requirements of the *Wildlife Protection (Regulation of Exports and Imports) Act 1982 (Cwth)*.
 - Completing the implementation of the protocol for leatherwood honey management on all Public Land tenures throughout the State, as agreed between the Tasmanian Beekeepers' Association, Forestry Tasmania, the Department of Primary Industry and Fisheries and the Department of Environment and Land Management.

Priority Areas of Research

The following research areas will be used as a guide by the Parties when they are examining research proposals and establishing research programs. The Parties agree that the following areas represent priorities for research.

1. Biodiversity conservation and management

- Development of biodiversity indicators for assessing ESFM.
- Reserve management and predictive models of species, communities and successional processes for major Forest types.
- Strategic information for private landowners to protect and maintain biodiversity.
- The effects of plantation establishment and management on biodiversity conservation, both within the plantations and in adjacent natural ecosystems.
- The effects of Forest management on changes in biodiversity and other Forest values.
- Research to underpin requirements for Recovery Plans and Threat Abatement Plans and the development of the means to assess the effectiveness of such conservation plans.
- Taxonomy, ecology and conservation management of poorly known species.

2. Carbon budgets/flows

- Research priorities identified in the National Greenhouse Response Strategy.
- Long-term analyses of carbon flows from vegetation clearance according to broad vegetation classification.
- Estimating the impact of the following activities on the carbon cycle: fire, harvesting and plantation establishment.

3. Fire

- Environmental impacts of fire regimes and ecological management of fire.

4. Heritage conservation (natural and cultural)

- Site specific heritage resources.

5. Non-wood values of Forests

- Valuing non-wood uses (e.g. biodiversity, soil and water, recreation, and natural and cultural heritage).
- Social and economic values to the community of tourism and recreation in Private Forest Estate.
- Further clarification of the ratio of Tasmanian, domestic and international visits to State Forests.
- Possible ecological impacts of beekeeping in natural areas.

6. Pests

- Cost effective detection, evaluation of impacts, identification and control of pests and diseases in Native Forests and plantations.
- Development of integrated management systems for weeds, browsing mammals, and insect pests to reduce or eliminate chemical use.

7. Silviculture techniques

- Factors contributing to defect in "young" eucalypts and their impact on sawlog yield.
- Research into silviculture techniques, including tree breeding and regimes for high value uses such as sawlogs and veneer.
- Development of indicators for reporting on regeneration success and trends and sustainability of forest ecosystems.
- Estimating the cumulative effects of individual disturbances and interactions between disturbances.
- Research, development and marketing of Forest products and Forest based commercial activity.
- Commercial viability of new and alternative silvicultural techniques especially for harvesting and regenerating wet eucalypt Forests and maximising special species timbers production and regeneration where appropriate.

- Development of a comprehensive inventory of the regenerated Forest.

8. Social and economic research

- Monitoring of changes in communities dependent on Forests to provide information for sustainability indicators.
- Research into sustainable tourism in Tasmania.
- Identify priority locations/areas that have significant potential for nature based tourism development.
- Facilitate production and marketing networks existing and emerging industry participants in the wood and wood products industry.
- Pre-feasibility and feasibility studies for industry projects with strategic significance that have real economic potential for the State or the nation. Priorities include:
 - ◆ reconstituted panels;
 - ◆ engineered products;
 - ◆ pulp and paper; and
 - ◆ other value adding opportunities.
- Sawing and seasoning eucalypt timbers (particularly backsawn timber from regrowth and plantation grown timber):
 - ◆ develop new seasoning techniques, including (as current emphases):
 - ◆ control and monitoring equipment for commercial pre-drying;
 - ◆ techniques for the use of solar kilns; and
 - ◆ techniques for the use of thermal vacuum systems.
- Study possible market uses for sawn timber currently graded as framing timber, to include resawing of existing stocks into new products where this is commercially practicable.
- Develop technologies for the use of eucalypt in manufacturing wood products (for example panel products, laminated beams, paper etc.).

9. Soil and water conservation

- Determine the major physical and chemical characteristics of Forest soils in Tasmania, evaluate the potential impact of forest operations and develop hazard rating systems.

- Catchment planning to protect soil and water values on all land tenures.
- Determine the spatial distribution of forest soils for incorporation into geographic information systems.
- Evaluation of the effectiveness of erosion risk on Public Lands and currently prescribed buffer and filter strips in protecting water quality and aquatic systems, especially of temporary streams.
- Evaluate the nutrient supply characteristics of Forest soils to determine sustainability criteria.
- Monitor plantation soils, hydrology, and nutrition for nutrient flows and water quality.
- Environmental water requirements: establish baseline monitoring systems for stream flow and water quality across a range of forest types, evaluate the impact of forest operations and refine stream protection measures accordingly.

Data Use and Access

1. Definitions

For the purpose of this Attachment the following definitions will apply:

| | |
|---------------------------|---|
| <i>Data</i> | All information, including maps, reports, images, computer files and programs. |
| <i>Data Owner</i> | The individual/s or organisation/s which has/have rights of ownership of the intellectual property of the data. |
| <i>Jointly Owned Data</i> | Data which is jointly owned by the Commonwealth and the State. |
| <i>Data Custodian</i> | The individual(s) or organisation(s) which is/are responsible to the Data Owner(s) for the maintenance and updating of the data by agreement. |
| <i>Data Provider</i> | An individual or organisation which provides Data for the purposes of this Agreement. |
| <i>RFA Purpose</i> | For the purpose of development, implementation, monitoring or reporting of the this Agreement. |
| <i>Metadata</i> | Data consisting of descriptions or specifications of source data or derived information. |

2. Jointly Owned Data

Jointly Owned Data used for RFA Purposes is listed in Schedule 1 of this Data Attachment.

Access to this Data will where appropriate, be made subject to confidentiality and copyright restrictions by the Data Owners.

Schedule 1 lists the status of all Jointly Owned Data as either Restricted, General or Public Domain. Each of these status categories has different content, management, maintenance, access, and use as detailed below.

2.1 Restricted Data

Content:

- Restricted data is considered sensitive by a Data Owner and is only available to third parties by agreement of both Data Owners on a case by case basis.

Management and maintenance:

- Copies of the Data will be held at two Commonwealth locations and two State locations. Each Data Owner will maintain and manage this version of the Data.

Access and Use:

Except where both Data Owners agree, Restricted Data may only be used for:

- RFA Purposes; or
- for purposes associated with the provision of advice to State or Commonwealth Ministers; or
- fulfilling statutory obligations that do not relate to the substance of this Agreement.

Access to this Data by third parties will be subject to users entering into a form of written licence agreement with both Data Owners, incorporating the standard conditions listed in paragraph 4.4 below.

2.2 General data

Content:

- General Data is available to third parties by agreement with one of the Data Owners.

Management and maintenance:

- Copies of the Data will be held at two Commonwealth locations and two State locations. Each Data Owner will maintain and manage this version of the Data.

Access and Use:

General Data may be used:

- by the Commonwealth and State for any internal government purposes; or
- by any third parties upon request.

Access to this Data will be subject to users entering into a form of written licence agreement with one of the Data Owners, incorporating the standard conditions listed in paragraph 4.4.

Each Party will advise the other government of all data transfers to third parties.

2.3 Public Domain data

Content:

- Public domain Data is freely available to the public without restriction.

Management and maintenance:

- Copies of the Data will be held at two Commonwealth locations and two State locations. Each Data Owner will maintain and manage this version of the Data.

Access and Use:

- Public domain Data and products will be available for unrestricted use subject only to the copyright interests of the Data Owners being protected by the inclusion of the normal copyright symbol and a prominent statement on all Data that "copyright is vested in the Crown in Right of the State of Tasmania and the Crown in Right of the Commonwealth of Australia".

2.4 New Jointly Owned Data

All information whose collection, preparation, or enhancement is jointly funded by the Parties for the implementation, monitoring, or reporting of this Agreement will, wherever it is prepared in a form which is capable of ownership, become jointly owned. Details of custodianship, management, maintenance, access and use will be agreed on a case by case basis.

2.5 Versions and Upgrades

The latest version of all Jointly Owned Data will be exchanged within 3 months of the commencement of this Agreement. Any significant upgrades of Jointly Owned Data carried out by one Data Owner will be reported to the other.

If upgraded versions of Jointly Owned Data are developed in the course of the normal business of either Government, they will be provided to the other at a reasonable cost. If they are developed for RFA purposes the new versions will be deemed to be jointly owned and will be provided at no cost.

Upon receipt of an upgraded version of any Jointly Owned Data, each Data Owner will ensure that all previous versions are replaced, and that the dataset name and metadata of the new version clearly identify its upgraded status.

3. Other Data

Each Party will provide appropriate mutual access to and accreditation of Data which is not Jointly Owned Data but which was used for RFA purposes. Such Data will only be used in a manner which respects all rights of ownership, confidentiality, and copyright of the Data Owners and Data Providers. It follows such Data will not be used or released in a manner contrary to those rights of ownership and confidentiality unless the relevant Data Owners and Data Providers have agreed in writing.

Where RFA purposes require the joint use of information owned by one Party, mutual access will wherever possible be achieved by joint inspection and accreditation of that Party's information and processes. Any necessary transfer of such information will be permitted subject to the other Party agreeing to enter into a form of written licence agreement incorporating the standard conditions listed in paragraph 4.4 below.

Data which is not jointly owned but which is exchanged for RFA purposes may be supplied to a third party only with the prior written permission of the Data Owner (and where relevant the Data Provider) and subject to users agreeing to enter into a form of a written licence agreement incorporating the standard conditions listed in paragraph 4.4 below.

Not later than one month after signing this Agreement each Party will delete and cause not to be accessed all copies of Data which they do not own but were provided for RFA Purposes, unless otherwise agreed to in writing by the respective Data Owners.

4. Administration

4.1 Data archival

Content:

- a copy of all Data used for RFA Purposes will, where permitted by the Data Providers, be securely archived and maintained by the Data Owner or agreed custodian of that information. Listing and archiving of that Data is to be completed within three months of the commencement of this Agreement.

Management and maintenance:

- A copy of the Jointly Owned Data will be archived and lodged with both Parties. The archive of Jointly Owned Data will be managed and maintained by the individual Parties at secure locations. All other Data will be archived by the individual owner or nominated custodian.

- All archiving of Data will be carried out according to agreed standard archival procedures, which must provide appropriate security and continuing recoverability of the Data.

Access and Use:

- Archived Data will not be accessible to any third parties.
- Archived Jointly Owned Data will be accessible to the other Party for RFA Purposes.
- Archived Data which is owned by one Party will not be accessible to the other Party without the agreement of the Party who owns the Data.

4.2 Persons responsible

The Parties will nominate delegates to represent and manage their rights and responsibilities as Data Owners. A Data Owner may designate Data Custodians to manage and maintain Data on their behalf.

4.3 Documentation of data

Metadata:

- The Australian New Zealand Land Information Council (ANZLIC) Metadata Guidelines, (Page 0 level, including a statement of scale and an attribute list including descriptions), will be used to describe all Jointly Owned Data and archived Data. All metadata will be freely exchanged in electronic form.

Schedules:

- Copies of the Schedule to this Attachment will be jointly monitored by the Parties and will be modified as required to reflect all changes in data status, versions, and custodianship.

4.4 Conditions of Access to Data

The following are the standard conditions that may be imposed by a Data Owner on the access to Data:

- that the form of the Data can only be reproduced for a specific purpose;

- the Data itself shall not without prior written approval be made public or disclosed to any other person (with appropriate exceptions being made);
- the right to access the Data is non-exclusive and non-transferable;
- the right to reproduce and access shall terminate by a certain date;
- that all copies of the Data must be returned and/or deleted or destroyed on the expiration or termination of the access period;
- that the user shall ensure that all of their employees and agents and sub-contractors are aware of and comply with the above conditions;
- that the user shall keep the Data Owner indemnified against any loss, damage or legal liability which may arise in respect of a breach of any of the above conditions;
- that all identified restrictions that have been placed on the use of the Data by a Data Owner or a Data Provider will be complied with.

Schedule 1 of Attachment 14. Jointly Owned Data.

| NO | DATA TITLE | DESCRIPTION | TYPE of DATA | ATTRIBUTES | STATUS | CUSTODIAN |
|----|--|--|----------------------------------|--|--|-----------------------------|
| 1 | Environmental domains for CRA | Revised environmental domains for CRA ie. areas classified according to their primary environmental characteristics that are known to regulate key physical processes and biological responses within a given area. (ENVDOM) | Grid | ENVDOM-ID - Environmental domain number. | General | Parks and Wildlife Service |
| 2 | Forest senescence | Digital map of proportion of senescing trees in eucalypt forests stands. (SEN9610) | Polygon | SENCODE - Degree of senescence and levels of disturbance and regrowth stages. | Restricted | Forestry Tasmania |
| 3 | Forest vegetation communities. 1. 25K state-wide 2. 100m grid public only 3. 500m grid private only | Digital map of the forest vegetation communities. Three coverages: 1. VEG9702 25K state-wide coverage 2. VEG9702PUBG 100 metre grids covering public owned land only 3. VEG9702PRIG 500 metre grids covering privately owned land only | 1. Polygon 2. Grid 3. Grid | VEGCOMM - Vegetation community | 1. Restricted 2. General 3. Restricted | Parks and Wildlife Service |
| 4 | 1750 forest vegetation communities | Data table of pre 1750 areas for each forest vegetation community. (RECON1750) | Table | VEGCOMM - Vegetation community | Public Domain | Parks and Wildlife Service |
| 5 | Mineral potential tracts | Digital maps of the potential for mineral deposit types (38). | Polygon | GEOLOGY - Letter code for geological rock units. RCODE - Numeric code used as a link to lookup tables GRIDCODE - Cumulative score for each tract | General | Bureau of Resource Sciences |
| 6 | Cumulative mineral potential | Digital map of grid addition of above tracts. (CUMULATIVE) | Polygon | GRIDCODE - Cumulative score for each tract. | General | Bureau of Resource Sciences |
| 7 | Composite mineral potential | Digital map representing the above tracts taking the highest value for each polygon intersection. | Polygon | COMP7-3_POT - Composite score for each tract . | General | Bureau of Resource |

| NO | DATA TITLE | DESCRIPTION | TYPE of DATA | ATTRIBUTES | STATUS | CUSTODIAN |
|----|--|---|--------------|---|---------|-----------------------------|
| | | (COMP7-3) | | | | Sciences |
| 8 | Weighted composite mineral potential | Digital map of grid addition of mineral tracts weighted for the significance of each mineral deposit type. (COMP4-3) | Polygon | COMP4-3_POT - Weighted composite score for each tract | General | Bureau of Resource Sciences |
| 9 | Airborne geophysics project 652 | Digital map of magnetics and radiometrics for the Arthur-Pieman area of NW Tasmania at 200m spacing. | Polygon | RADARALTIMITER - Terrain clearance DTM POTASSIUM - Radiometric data URANIUM - Radiometric data THORIUM - Radiometric data TOTALCOUNTS - Radiometric data | General | Bureau of Resource Sciences |
| 10 | NE - Special Soils Mapping in Buttongrass Areas. | Digital map of the distribution of special soils in Buttongrass areas. It is based on the distribution of Buttongrass moorlands in Tasmania. (BGRASS97) | Polygon | BGSVEGCODE - Buttongrass vegetation code BGSNEVALUE - NE value BGSNECRITERIA - NE criteria | General | Environment Australia |
| 11 | NE - Tasmanian Natural History - Reference, Research and Teaching Sites. | Digital map detailing natural history sites that are used for reference, research and teaching purposes. (C1REFCOV97) | Polygon | C1CNAMES - Name of reference, research or teaching site. C1CNEVALUE - NE value C1CNECRITERIA - NE criteria | General | Environment Australia |
| 12 | NE - Sample of Historic Mining Sites in Tasmanian Forests. | Digital map detailing a sample of historic mining sites in Tasmanian forests designed to fill gaps in the knowledge of mining sites of National Estate significance in Tasmanian forests. (PEARSONCOV97) | Polygon | PSCCODE - code to identify historic mining sites. PSCNEVALUE - NE value PSCNECRITERIA - NE criteria | General | Environment Australia |
| 13 | NE - Sample of Historic Places Found in or Related to Tasmania Forests. | Digital map detailing examples of each of the major categories of historic places found in or related to Tasmanian forests. (DMARSHCOV97) | Polygon | DMCCODE - code given to historic forest places. DMCNEVALUE - NE value DMCNECRITERIA - NE criteria | General | Environment Australia |
| 14 | NE - Historic Transport Routes and Timber Getting Sites of Tasmania. | Digital map detailing examples of historic transport routes through Tasmania's forests and historic timber getting sites in the Circular Head district of north-western Tasmania. | Polygon | TYPE - code to identify type of potential National Estate place TKSNEVALUE - NE value TKSNECRITERIA - NE criteria | General | Environment Australia |

| NO | DATA TITLE | DESCRIPTION | TYPE of DATA | ATTRIBUTES | STATUS | CUSTODIAN |
|----|---|--|--------------|--|---------|-----------------------|
| | | (TRACKS97) | | HISTORYCODE - code to identify historic transport routes and historic timber getting sites. | | |
| 15 | NE - Geoconservation Mapping of Tasmania. | Digital map detailing geological, geomorphological, and soil sites of conservation and heritage value. (CTASGM97) | Polygon | TGMNEVALUE - NE value, TGMNECRITERIA - NE criteria P1 to P5 - Code identifying geoconservation polygons. P6 - Code identifying geoconservation arcs. P7 - Code identifying geoconservation points. | General | Environment Australia |
| 16 | NE - Disjunct Fauna Populations. | Digital map of fauna populations which are separated from their normal area of distribution by at least 50 kilometres. (DISJUNCTFA97) | Polygon | DFACODE - Number identifying each disjunct fauna locality. DFANEVALUE - NE value DFANECRITERIA - NE criteria | General | Environment Australia |
| 17 | NE - Disjunct Flora of Tasmania. | Digital map of places where concentrations of disjunct flora populations occur, ie. flora populations which are separated from their normal area of distribution by at least 50 kilometres. (DISJUNCTFL97) | Polygon | DFLCODE - Code to identify disjunct flora localities. DFLNEVALUE - NE value DFLNECRITERIA - NE criteria | General | Environment Australia |
| 18 | NE - Centres of Endemism - Fauna | Digital map of centres of endemic fauna, ie. areas where concentrations of exclusively Tasmanian fauna species are found. (ENDCENFA97) | Polygon | CFACODE - Number to identify each centre of endemic fauna locality CFANEVALUE -- NE value CFANECRITERIA - NE criteria | General | Environment Australia |
| 19 | NE - Centres of Endemism - Flora | Digital map detailing the centres of endemic flora, ie. areas where concentrations of exclusively Tasmanian flora species are found. (ENDCENTRE97) | Polygon | CTRCODE - code identifying centre of endemic flora polygons CTRNEVALUE - NE value CTRNECRITERIA - NE criteria | General | Environment Australia |
| 20 | NE - Fauna Type | Digital map detailing type localities for Tasmanian | Polygon | EFACODE - number to identify | General | Environment |

| NO | DATA TITLE | DESCRIPTION | TYPE of DATA | ATTRIBUTES | STATUS | CUSTODIAN |
|----|----------------------------|---|--------------|--|---------|--------------------------|
| | Localities | rare and threatened forest fauna species. (ENDFAUNA97) | | fauna type locality polygons. EFANEVALUE - NE value EFANECRITERIA - NE criteria | | Australia |
| 21 | NE - Flora Type Localities | Digital map detailing type localities for Tasmanian rare and threatened forest flora. (ENDFLORA97) | Polygon | EFLCODE - code to identify each flora type locality polygon. EFLNEVALUE - NE value EFLNECRITERIA - NE criteria | General | Environment Australia |

| | | | | | | |
|----|--|--|----------------------------------|---|--|--------------------------|
| 22 | NE - Limits of Range - Fauna | Digital map detailing places where concentrations of fauna species reach the limits of their natural range. (FAUNALIM97) | Polygon | FALCODE - number to identify each limits of range of fauna locality. FALNEVALUE - NE value FALNECRITERIA - NE criteria | General | Environment Australia |
| 23 | NE - Limits of Range - Flora | Digital map detailing places where concentrations of flora species reach the limits of their natural range. (FLORALIM97) | Polygon | FLLCODE - number to identify each limits of range of flora locality. FLLNEVALUE - NE value FLLNECRITERIA - NE criteria | General | Environment Australia |
| 24 | NE - Natural Landscapes of Tasmania | Digital map detailing significant natural landscapes. (NATLAND97) | Polygon | NTDSTATUS - natural landscape/not natural landscape NTDNEVALUE - NE value NTDNECRITERIA - NE criteria | General | Environment Australia |
| 25 | NE - Primitive and Relictual Fauna of Tasmania | Digital map detailing areas of Tasmania rich in primitive and relictual fauna, ie. Fauna that exhibit taxonomic remoteness or phylogenetic primitiveness or both. (PRIMFAUNA97) | Polygon | PFACODE - number to identify each primitive and relictual fauna locality. PFANEVALUE - NE value PFANECRITERIA - NE criteria | General | Environment Australia |
| 26 | NE - Primitive and Relictual Flora of Tasmania | Digital map detailing areas rich in primitive and relictual flora, ie. flora that exhibit taxonomic remoteness or phylogenetic primitiveness or both. (PRIMFLORA97) | Polygon | PFLCODE - code to identify primitive and relictual flora polygons. PFLNEVALUE - NE value PFLNECRITERIA - NE criteria | General | Environment Australia |
| 27 | NE - Rare or Threatened Forest Communities. | Digital map detailing rare or threatened forest communities ie. Those of naturally rare occurrence or depleted by European land use and/or subject to | 1. Polygon 2. Grid 3. Grid | RARVEGCOMM - Mapping unit code describing the forest vegetation community type. | 1. Restricted 2. General 3. Restricted | Environment Australia |

| NO | DATA TITLE | DESCRIPTION | TYPE of DATA | ATTRIBUTES | STATUS | CUSTODIAN |
|----|--|---|--------------|--|--------|-----------|
| | 1. 25K state-wide 2. 100m grid public only 3. 500m grid private only | continuous threatening processes. Three coverages: 1. RARECOMM97 state-wide coverage 2. RARECOMMPUBG 100 metre grids covering public owned land only 3. RARECOMMPRIG 500 metre grids covering privately owned land only | | RARNEVALUE - NE value RARNECRITERIA - NE criteria | | |

| | | | | | | |
|----|---|--|---------|---|---------|-----------------------|
| 28 | NE - Glacial Refugia Areas of Tasmania | Digital map detailing glacial refugia areas, ie. areas that have escaped drastic alteration, in contrast to the surrounding area, within a region that has undergone general glaciation. (REFUGIAPAST97) | Polygon | RPACODE - number to identify glacial refugia polygons. RPANEVALUE - NE value RPANECRITERIA - NE criteria | General | Environment Australia |
| 29 | NE - Flora Species and Forest Community Richness | Digital map detailing sites with a high flora species or forest community richness. (RICHNESS97) | Polygon | RCHCRCODE - code to identify forest community richness localities. RCHSRCODE - code to identify flora species richness localities. RCHNEVALUE - NE value RCHNECRITERIA - NE criteria | General | Environment Australia |
| 30 | NE - Species Richness - Fauna | Digital map detailing areas with a high fauna species richness. (RICHNESSFA97) | Polygon | RFACODE - number to identify each fauna richness locality. RFANEVALUE - NE value RFANECRITERIA - NE criteria | General | Environment Australia |
| 31 | NE - Places of Aesthetic Value in Tasmanian Forests | Digital map detailing places of potential National Estate aesthetic value related to Tasmanian forests. (SOCAEST97) | Polygon | AESCODE - code to identify aesthetic value polygons. AESNEVALUE - NE value AESNECRITERIA - NE criteria | General | Environment Australia |
| 32 | NE - Places of Social Value in Tasmanian Forests | Digital map detailing places of indicative National Estate social value in Tasmanian forests. (SOCIAL97) | Polygon | SOCVALNAME - Name of social values place SOCNEVALUE - NE value | General | Environment Australia |

| NO | DATA TITLE | DESCRIPTION | TYPE of DATA | ATTRIBUTES | STATUS | CUSTODIAN |
|----|---|---|----------------------------------|---|--|-----------------------|
| | | | | SOCNECRITERIA - NE criteria | | |
| 33 | NE - Vegetation Succession Sites | Digital map detailing the locations of places that are important for vegetation succession. (SUCCESSION97) | Polygon | SUCCODE - code to identify vegetation succession polygons. SUCNEVALUE - NE value SUCNECRITERIA - NE criteria | General | Environment Australia |
| 34 | NE - Undisturbed River Catchments of Tasmania | Digital map detailing undisturbed river catchments. (UDCATCH97) | Polygon | UDCSTATUS - disturbance status of catchment UDCNEVALUE - NE value UDCNECRITERIA - NE criteria | General | Environment Australia |
| 35 | NE - Important Wetlands of Tasmania | Digital map detailing important wetlands of Tasmania i.e. those listed in the Directory of Important Wetlands in Australia (ANCA, 1996). (WETLANDSREP97) | Polygon | WETNECODE - code to identify each important wetlands area. WETNEVALUE - NE value WETNECRITERIA - NE criteria | General | Environment Australia |
| 36 | NE - Remnant Vegetation of Tasmania | Digital map of remnant patches of forest vegetation in highly modified environments. | Polygon | RMVSTATUS- Remnant vegetation/not remnant vegetation, RMVNEVALUE - NE value, RMVNECRITERIA - NE criteria | General | Environment Australia |
| 37 | NE - Key Fauna Habitat | Digital map of important fauna habitat areas for rare and threatened forest fauna. | Polygon | HABCODE - Code to identify Important fauna habitat, HABNEVALUE - NE value, HABNECRITERIA - NE criteria | General | Environment Australia |
| 38 | NE - Refugia from Present Processes. | Digital map of refugia from present processes including fire and disease. | Polygon | RPRCODE - Number to identify refugia from present processes, RPRNEVALUE - NE value, RPRNECRITERIA - NE criteria | General | Environment Australia |
| 39 | NE - Principal Characteristics of Forest Vegetation Classes 1. 25K state-wide 2. 100m grid public only 3. 500m grid private only | Digital map of forest vegetation that is representative of its vegetation class. Three coverages : 1. REPVEG97 state-wide coverage 2. REPVEGPUBG 100 metre grids covering public owned land only 3. REPVEGPRIG 500 metre grids covering | 1. Polygon 2. Grid 3. Grid | RPVVEGCOMM - vegetation community type RPVNEVALUE - NE value, RPVNECRITERIA - NE criteria | 1. Restricted 2. General 3. Restricted | Environment Australia |

| NO | DATA TITLE | DESCRIPTION | TYPE of DATA | ATTRIBUTES | STATUS | CUSTODIAN |
|----|---|---|----------------------------------|---|--|-----------------------|
| | | privately owned land only | | | | |
| 40 | NE - High Quality Oldgrowth of National Estate Significance 1. 25K state-wide 2. 100m grid public only 3. 500m grid private only | Digital map of high quality old-growth forest of National Estate significance in dry and sub-alpine eucalypt communities, wet eucalypt communities and non-eucalypt communities. Three coverages : 1. OGA297 state-wide coverage 2. OGA2PUBG 100 metre grids covering public owned land only 3. OGA2PRIG 500 metre grids covering privately owned land only | 1. Polygon 2. Grid 3. Grid | OGA2CODE -Whether or not polygon/grid is high quality old-growth that meets National Estate criteria A2 , OGA2NEVALUE - NE value, OGA2NECRITERIA - NE criteria, | 1. Restricted 2. General 3. Restricted | Environment Australia |

| | | | | | | |
|----|---|---|----------------------------------|---|--|----------------------------|
| 41 | NE - Rare, Endangered or Uncommon Oldgrowth of National Estate Significance 1. 25K state-wide 2. 100m grid public only 3. 500m grid private only | Digital map of old-growth forest communities that are rare or uncommon on a state-wide or nation-wide scale, and endangered old-growth forest. Three coverages : 1. OGB197 state-wide coverage 2. OGB1PUBG 100 metre grids covering public owned land only 3. OGB1PRIG 500 metre grids covering privately owned land only | 1. Polygon 2. Grid 3. Grid | OGB1CODE - Whether or not the polygon/grid is old-growth that meets National Estate criteria B1, OGB1NEVALUE - NE value, OGB1NECRITERIA - NE criteria | 1. Restricted 2. General 3. Restricted | Environment Australia |
| 42 | NE - Geoconservation database | Database of information concerning sites of geoconservation significance. | Microsoft Access Database | Site name, site description, site location in AMGs, comments, management notes ,references | 1. Restricted (data available subject to sensitivity rating) | Parks and Wildlife Service |
| 43 | Old-growth forests 1. 25K State-wide | Digital map of the old-growth forests derived from expert opinion, senescence and disturbance. Three coverages : | 1. Polygon 2. Grid 3. Grid | OG - Old-growth/not old-growth | 1. Restricted 2. General 3. Restricted | Forestry Tasmania |

| NO | DATA TITLE | DESCRIPTION | TYPE of DATA | ATTRIBUTES | STATUS | CUSTODIAN |
|----|---|--|--------------|--|---------|----------------------------|
| | 2. 100m grid public only 3. 500m grid private only | 1. OG9701 25K state-wide coverage 2. OG9701PUBG 100 metre grids covering public owned land only 3. OG9701PRIG 500 metre grids covering privately owned land only | | | | |
| 44 | National Wilderness Inventory database | Database of four wilderness indicator values (including biophysical naturalness) and the combined wilderness quality index. | Grid | RA - Remoteness from access RS - Remoteness from settlement AN - Apparent naturalness BN - Biophysical naturalness WQ - Wilderness quality | General | Environment Australia |
| 45 | Post-aerial photography fires | Digital map of boundaries of major wildfires after the date of aerial photography used to produce photo-interpreted forest types. (FIRE9610) | Polygon | FIRENAME - Fire name, FIREDATE - Year (season) of fire, FIRESIZE - area of fire, TCFIRE - crown fire/not crown fire, S - spot fires/not spot fires, MFHEIGHT - main flame height of fire. | General | Forestry Tasmania |
| 46 | Roads for CRA | Digital map of roads mapped and classified for the purpose of CRA as a supplement to DELM base TASMAR road lines. (CRAROAD) | Line | ROADCLASS - road design standard, ROADOWNER - Current road owner, ROADSURFACE - Type of road surface, ROADACCESS - types of vehicles road is suitable to accommodate and its current/medium term condition, ROADGATE - position and status of known gates, | General | Forestry Tasmania |
| 47 | Slope Classes | Digital maps of slope generated from 25 metre DEM. (SLOPE) | Grid | SLOPECODE - Code for slope class | General | Forestry Tasmania |
| 48 | Species assemblages | Digital images of distribution of forest birds, amphibians and tree communities. (BIRDS97) | Image | Image Maps | General | Parks and Wildlife Service |

| NO | DATA TITLE | DESCRIPTION | TYPE of DATA | ATTRIBUTES | STATUS | CUSTODIAN |
|----|--|---|---------------------------|--|------------|----------------------------|
| | | (FROGS97) (TREES97) | | | | |
| 49 | Species modelled distributions and derived modelled distributions. | Database of modelled distributions of flora and fauna species using CORTEX modelling software at 1km resolution. | Grid | SPECIESMODEL - species name and envelope rank | General | Parks and Wildlife Service |
| 50 | Species site locations for the CRA. | Flora and fauna species names and locations collected as part of CRA projects. (CRAGTSPOTS) | Point | SPECIESNAME - Species names EAST - AMG easting NORTH - AMG northing ACCURACY - known accuracy in metres | Restricted | Parks and Wildlife Service |
| 51 | Timber harvesting history. | Digital map of boundaries, method and time period of timber harvesting. (THH9609) | Polygon | LOGMETHOD - Logging method, LOGYEAR1 - year harvesting began, LOGYEAR2 - year of last harvest. | Restricted | Forestry Tasmania |
| 52 | Wild Rivers Database | Database of indices of naturalness and the combined river disturbance index. | Grid | SCDI - Sub-catchment Disturbance Index CDI - Catchment Disturbance Index FRDI - Flow Regime Disturbance Index RDI - River Disturbance Index | General | Environment Australia |
| 53 | NE - High Quality Wilderness of Indicative National Estate Value in Tasmania | Digital map of areas of high quality wilderness of indicative National Estate value. (WILDHQ9701) | Polygon | WILDHQNAME - Name of high quality wilderness area WILDHQSTATUS - whether or not high quality wilderness WHQNEVALUE - NE value WHQNECRITERIA - NE criteria | General | Environment Australia |
| 54 | Response to Disturbance Database | Database of Priority Species detailing response to disturbance used to generate reservation targets and management prescriptions for the species. | Microsoft Access Database | Life History, Population, Habitat Profile and Response to Disturbance information | General | Parks and Wildlife Service |
| 55 | Management Prescriptions Database | Database of a limited number of species of interest against management prescriptions and future | Microsoft Access | Prescriptions, source of information, quality of information | General | Parks and Wildlife Service |

| NO | DATA TITLE | DESCRIPTION | TYPE of DATA | ATTRIBUTES | STATUS | CUSTODIAN |
|----|------------------------------------|--|---|---|---------------|------------------------------|
| | | research, formulated through the CRA process. The prescriptions are of a descriptive format. | Database | | | |
| 56 | Published CRA/RFA reports and maps | Digital reports and maps published as part of the process of developing, implementing, monitoring, or reporting the RFA. | Document files, image files, postscript files | n/a | Public Domain | Environment Australia |
| 57 | Community attitudes survey | Community attitudes to forest issues | Document files, electronic database (SPSS format) | Survey of broad community attitudes to a range of forest issues | General | Social Assessment Unit, DPIE |
| 58 | Regional social profile | Australian Bureau of Statistics socio-economic data | Excel spreadsheet | Demographic statistics at sub-regional level | General | Social Assessment Unit, DPIE |
| 59 | Forest Users Survey | Survey of users with economic dependence on forests (including apiarists, graziers, seed collectors, forest managers and timber workers) | Document files, electronic database (SPSS format) | Patterns of forest use, employment, income, and demographic characteristics (by user group) | Restricted | Social Assessment Unit, DPIE |
| 60 | Social Case Studies | Detailed social profile of twelve case study areas (townships) | Document files | Community history, access to services, attitudes to forest use, sensitivity to change | General | Social Assessment Unit, DPIE |
| 61 | Business Dependency Survey | Survey of forest related businesses | Document files, electronic database (SPSS format) | Expenditure patterns by business operators and employees | Restricted | Social Assessment Unit, DPIE |

Contacts for Data Inquiries (November 1997):

Commonwealth contacts:

Project Manager National Forest Inventory
Bureau of Resource Sciences
Department of Primary Industries and Energy
Ph: 02 6273 5790
Fax: 02 6272 3882

Director, ERIN Regional Information Section
Environmental Resources Information Network
Environment Australia
Ph: 02 - 6274 1300
Fax: 02 - 6274 1333

Tasmania contacts:

Forestry Tasmania
Hobart Tas 7000
Ph: 03 6233 8143
Fax: 03 6233 8252

Information Services Manager
Conservation Strategy Branch,
Parks and Wildlife Service
Department of Environment and Land Management
Ph: 03 - 62332419
Fax: 03 - 62335955